

# State of Wyoming Corner Record

(In compliance with the *CORNER PERPETUATION AND FILING ACT*, Wyoming Statutes, 1997, Section 33-29-140, et seq., and the Rules and Regulations of the Board of Registration for Professional Engineers and Professional Land Surveyors)

Reverse side of this form may be used if more space is needed.

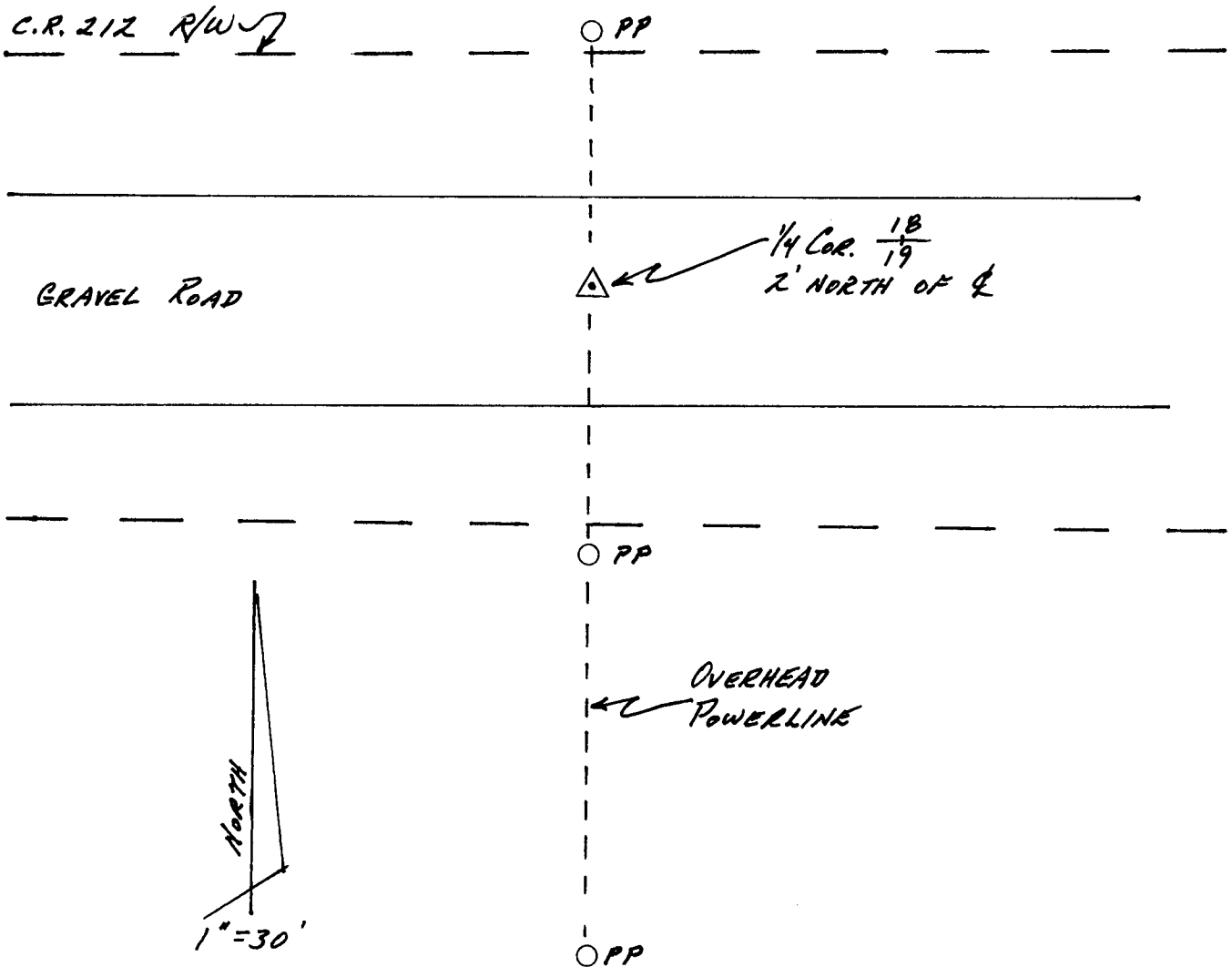
Record of original survey and citation of source of historical information (if corner is lost or obliterated). Description of corner monumentation evidence found and/or monument and accessories established to perpetuate the location of this corner. Sketch of relative location of monument, accessories, and reference points with course and distance to adjacent corner(s) (if determined in this survey). Method and rationale for reestablishment of lost or obliterated corner.

Quarter Corner: Sections 18/19, T14N, R60W, 6<sup>th</sup> PM, Laramie County, Wyoming

GLO record: 22"x18"x2 1/2" red sandstone

Found: No evidence of original monument; 2 1/2" Al. Surv Cap properly stamped with PLS 5910 and "SSS" dated 2003.

Set: N/A.



Date of Field Work: 30 June 2007

Office Reference: \_\_\_\_\_

### CROSS INDEX DIAGRAM

1	2	3	4	5	6	7	8	9	10	11	12	13	14	15	16	17	18	19	20	21	22	23	24	25	
A																									A
B																									B
C		6		5		4		3		2		1													C
D																									D
E																									E
F																									F
G		7		8		9		10		11		12													G
H																									H
J																									J
K																									K
L		18		17		16		15		14		13													L
M																									M
N																									N
O																									O
P		19		20		21		22		23		24													P
Q																									Q
R																									R
S																									S
T		30		29		28		27		26		25													T
U																									U
V																									V
W																									W
X		31		32		33		34		35		36													X
Y																									Y
Z																									Z
1	2	3	4	5	6	7	8	9	10	11	12	13	14	15	16	17	18	19	20	21	22	23	24	25	

Land Surveyor / Firm / Address

Studley Land Surveying, PC

John J. Studley, PLS No. 4828

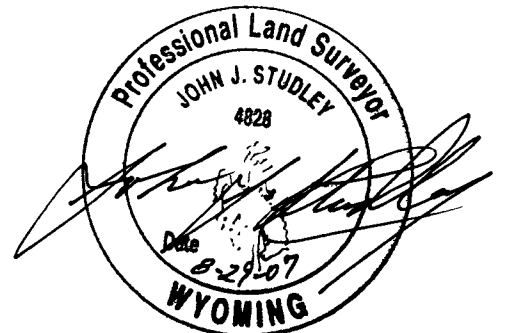
5805 E. 13<sup>th</sup> St.

Cheyenne, WY 82001

Telephone: 307-287-4755

This corner record was prepared by me or under my direction and supervision.

SEAL & SIGNATURE



Corner Name: Quarter Corner common to Sections: 18 & 19 T 14 N R 60 W ; 6<sup>th</sup> P.M. Cross-Index No.: N-3  
 SBRPEPLS/PLSW: March 1994; PLSW January 1998